

READING THE POETRY OF MIMI KHALVATI

EXERCISES

Resource pack by David Malcolm
and Tomasz Wiśniewski
Editor: Małgorzata Woźniak (AMU)
Visual identification:
Weronika Żółdziowska
Coordinators: Ewelina Stefańska,
Małgorzata Woźniak
and Paulina Niedzielska
Academic board:
Katarzyna Kręglewska (UG),
David Malcolm (SWPS),
Agnieszka Pantuchowicz (SWPS),
Tomasz Wiśniewski (UG).
Concept of the Between.Education
program: Tomasz Wiśniewski

Cover: Mimi Khalvati, *The Weather
Wheel*

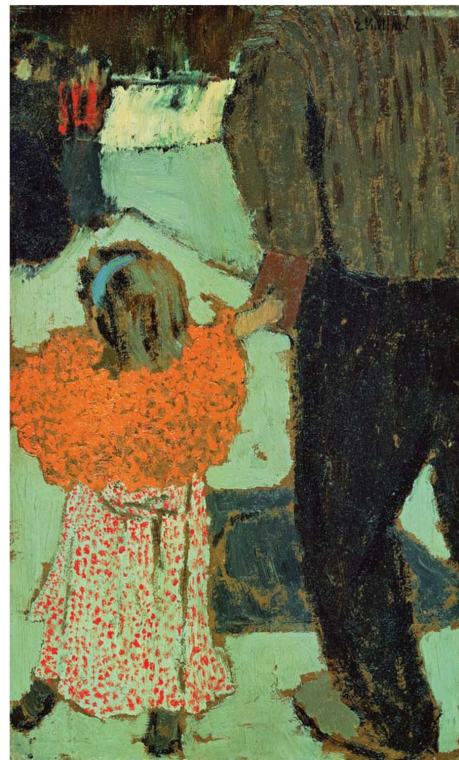


Exercise 1

What associations do you have with the following words?

- Exile
- Native language
- Loss
- Security
- Danger
- Trauma
- Survival
- Memory

MIMI KHALVATI *Child*
New and Selected Poems 1991–2011



Exercise 2

Choose one of the following tasks (or perhaps all of them?):

oWrite 100 words on exile, or danger, or loss.

oWrite 100 words on being a refugee.

oWhere do you feel safe?

- Write 100 words
- Take 7 photographs and create a visual essay.
- Be a director and create a short film (no longer than 2 minutes!).

MIMI KHALVAT *The Weather Wheel*



Exercise 3

Make a film that responds to the topics of exile and loss in the poem “Afterwardness.”

Find visual images of traditional Persian gardens. Find images of traditional European ones. Compare and contrast.

Exercise 4

Many Poles were exiles/refugees in Iran during the Second World War. Can you find any accounts or pictures of that time? Can you analyse and comment on them?

Do you know any stories from the contemporary Polish diaspora in Britain or the rest of Europe? Write some (or any) of them down.

How relevant is the poem “Afterwardness” to the world in which we live today? What’s the image you’d start with when speaking of an exile?

